



VATHiN



VATHiN

[www.vathin.com](http://www.vathin.com)  
[marketing@vathin.com](mailto:marketing@vathin.com)

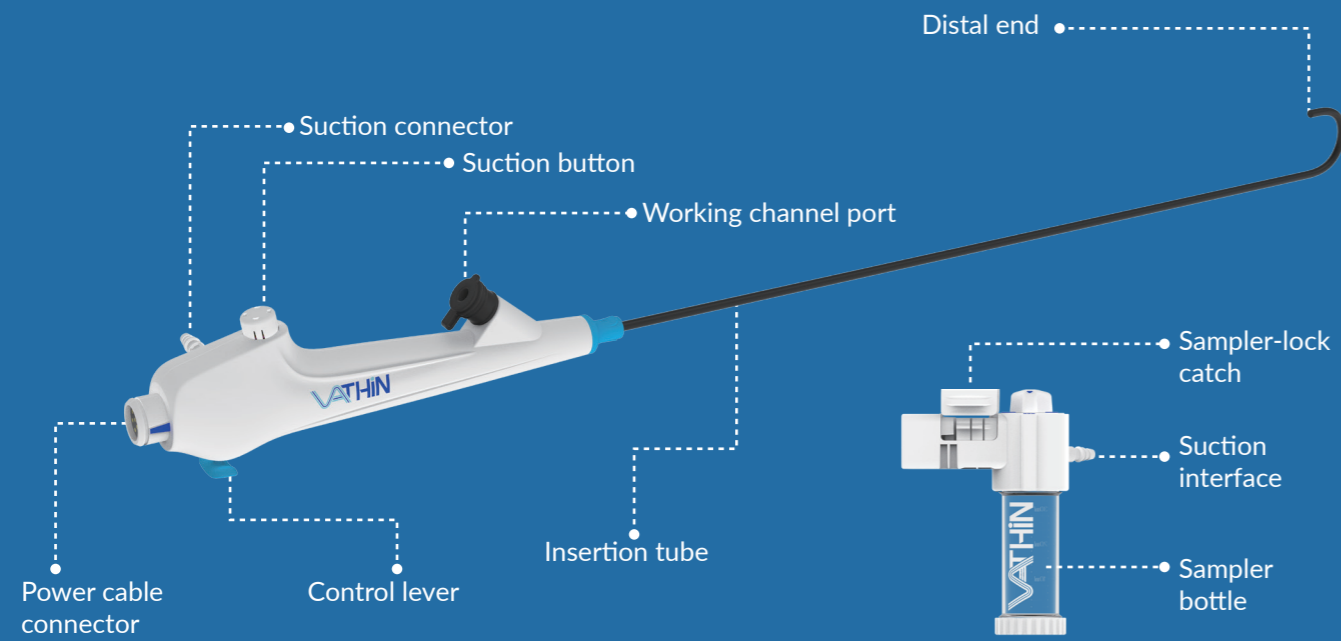
1st floor, Building 12 , No.9, West Chuanqi Road, Jiuhua  
Economic and Technological Development Zone, Xiangtan  
411100, China



Single-use  
**Flexible Bronchoscope**  
EleBALScope Series

## Dedicated BAL solution for ICU

Vathin EleBAL Scope series are specially designed for ICU and ER scenarios and target the clinical needs for safe sampling, ease-of-use and higher clinical performance.



**Higher Level Suction Performance**

**90%**  
larger working channel than conventional designs in the same outer diameter.

Just like the Elephant's trunk, Vathin BALScope Series features in efficient suction and reach, with powerful aspiration and collection capability.

## Product Features



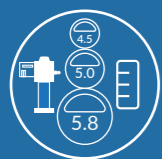
### Unique Large Channel Design

Larger channel, enhanced suction power and better clinical outcomes.



### Upgraded Visualization

720x1080 camera lens & full HD monitor.



### Available Sizes

4.5/5.0/5.8mm OD scopes and 20/30/50ml samplers



### Close-loop BAL Sampling System

Eliminate sample loss and contamination.



### Eco-friendly Design

Re-usable power cable, designed with the environment in mind.



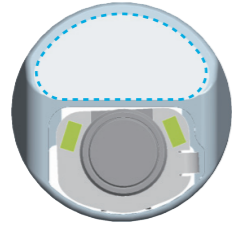
### Single-use System

Single-use. Accessible. Sterile. No risk of cross-contamination.

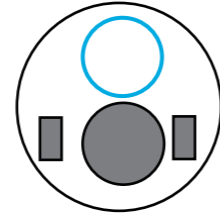
## Optimize Your BAL Efficiency

Vathin EleBAL Scope series features an optimized large working channel that enhances suction power, accommodating to day-to-day demand for timeliness and clinical outcome.

### Vathin EleBAL Scope Working Channel Design



### Conventional design



OD	4.5mm	5.0mm	5.8mm	5.8mm
Working channel	8.6 Fr	10.2 Fr	12.9 Fr	8.6 Fr
Working channel area	4.19 mm <sup>2</sup>	6.26 mm <sup>2</sup>	10.06 mm <sup>2</sup>	5.31 mm <sup>2</sup>

**LAGER** working channel, **SMALLER** outer-diameter  
**ENHANCED** patients' treatment experience

#### Options for 8.6/10.2/12.9Fr working channel

Lung infections are common in ICU patients, especially those on mechanical ventilation or with compromised immune systems. **Large-channel suction** is critical for clearing thick secretions (mucus or phlegm) that can block airways. Effective management with suctioning and BAL, alongside other treatments, can improve the patient's recovery prospects.

#### Options for 4.5/5.0mm OD with enhanced suction

Selecting the thinnest possible bronchoscope is crucial for minimizing airway resistance, especially in ICU patients who require long-term endotracheal tube placement. A thinner bronchoscope with equivalent suction power can efficiently perform BAL procedures while leaving more space within the tube, maintaining better airflow.

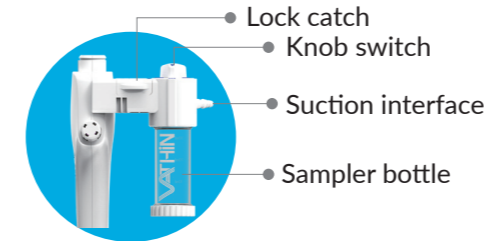
## Clinical Benefits

### Special Channel Design

- Beneficial in handling difficult secretion cases.
- Improves specimens yield which is crucial for diagnosing various lung conditions, such as infections, interstitial lung diseases, and malignancies.
- Significantly enhances BAL efficiency and the overall workflow. Reduces loss in time.
- Offers better options for BALscope OD and thus enhances patients' experiences.

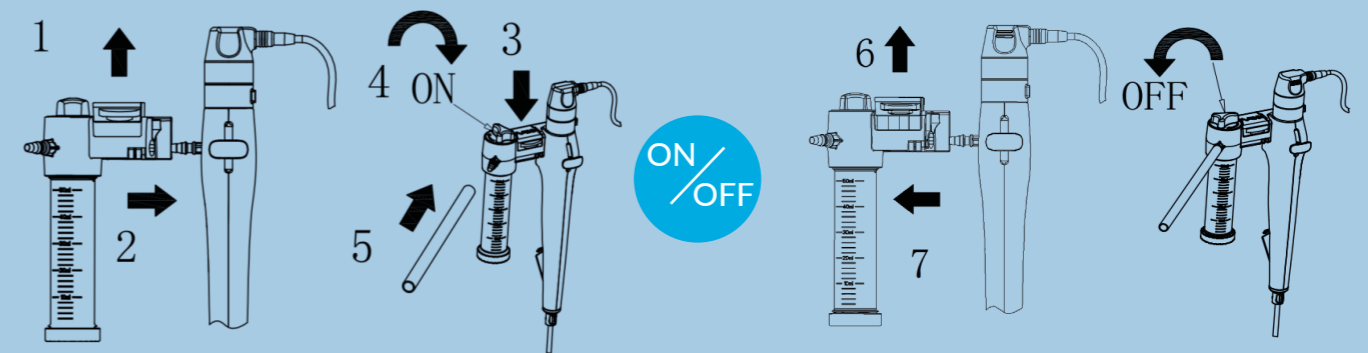
## Secure Your Sampling Procedure

Vathin EleBAL Scope series integrates a closed-loop sampler that essentially changes the sampling workflow, from sample exposure steps to fully sealed sampling procedure.



In a fully closed-loop mode, Suction & Collection can be simply alternated by the Knob Switch on the sampler.

### Streamlined Installation and Sampling by Vathin BAL Sampler



## Clinical Benefits

### Close-loop Sampler

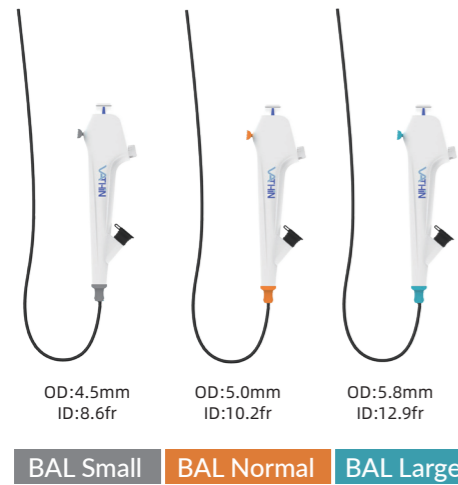
- Eliminates sample loss and contamination
- Improves sample quality and yield
- Reduces staff exposure to specimen
- Single-use sampler set. Ready to go when it's needed





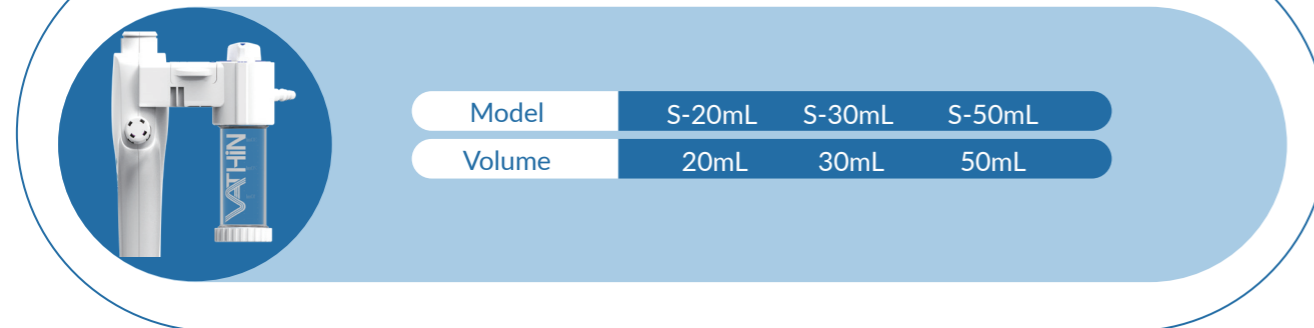
## Specification

### EleBAL Scope Series



Name	BAL Small	BAL Normal	BAL Large
Model	BC-E1C10	BC-E1E10	BC-E1H10
Insertion Tube OD	4.5 mm	5.0 mm	5.8 mm
Working channel	8.6 Fr	10.2 Fr	12.9 Fr
Bending Section	U180°/D150°		
Working Length	600mm		
Field of view	110°±15%		
Resolution	720x1080 plx		
ETT compatibility	≥5.5mm	≥6.0mm	≥6.5mm
DLT compatibility	≥35Fr	≥40Fr	≥40Fr

### BAL Sampler



## Displaying Unit



Vathin BALScope series is compatible with Vathin DVM-D displaying unit with full HD imaging system.

## HD Imaging System



Digital scope connector  
1280x720,1920x1080p30

Analog scope connector  
400x400,200x200;720x720

Model	DVM-D
Display resolution	1920*1080 (full HD 60Hz)
Display Type	15.6" FHD Color TFT-LCD
Dimension WxHxT	382 mmx 238mm x 44.5mm
Weight	3 kg
Storage Capacity	64GB

- ✓ High definition imaging system.
- ✓ Large screen for easier visualization.
- ✓ Simultaneous Dual-Scope Display offers
- ✓ Ideal clinical observation.

